



ILLINOIS STATE  
UNIVERSITY  
*Illinois' first public university.*

# Steam Trap Monitoring Technology

Chris Chestney, Pipefitter  
Rick Marr, Pipefitter Foreman  
Illinois State University  
Facilities Management

**2020 ILAPPA CONFERENCE**

March 11 & 12, 2020  
Illinois State University



# Steam Trap Monitoring Technology

## Background

- Implemented a campus wide steam trap survey in 2012
- First monitoring technology was installed in 2014

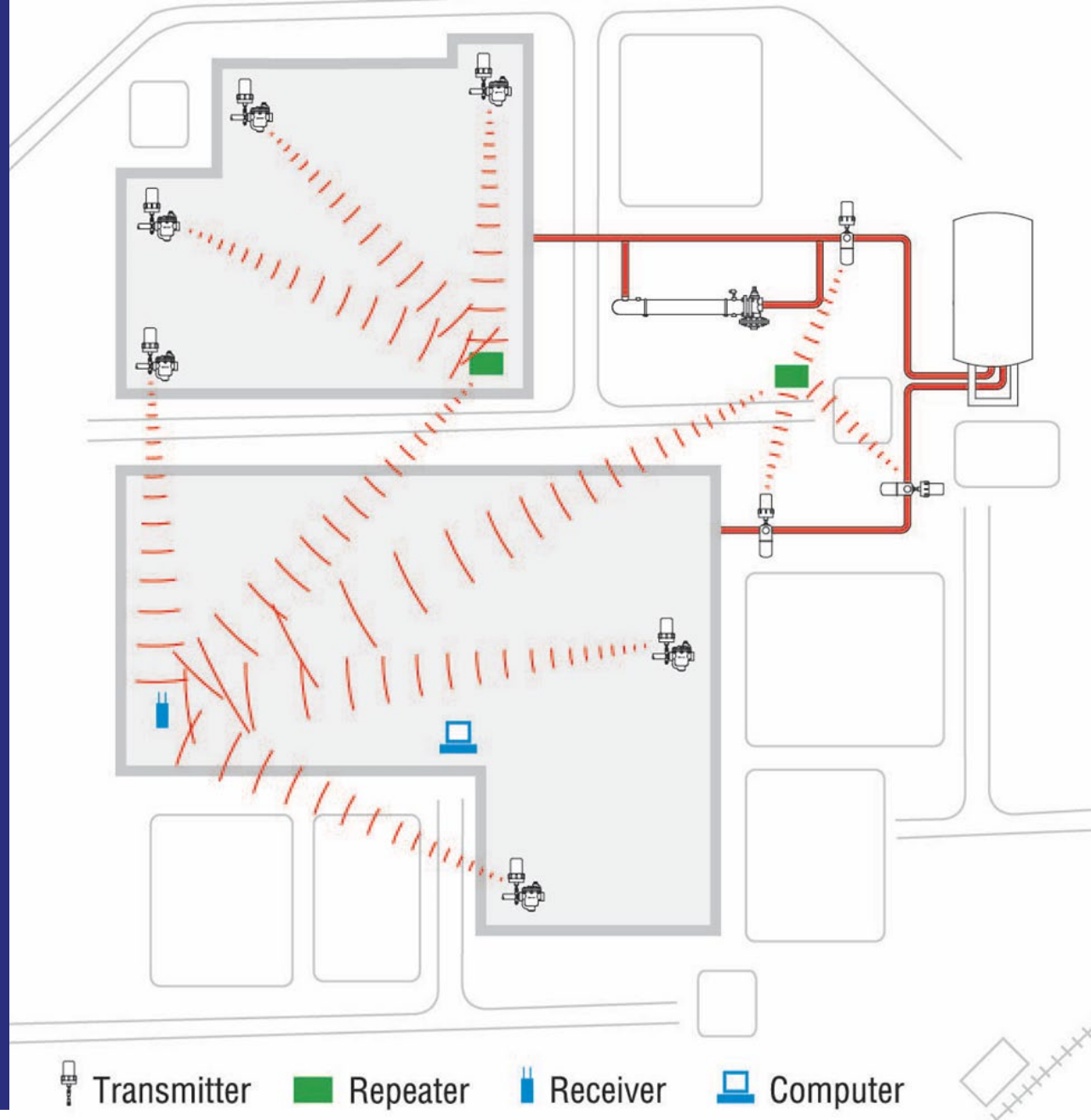
# Steam Trap Monitoring Technology

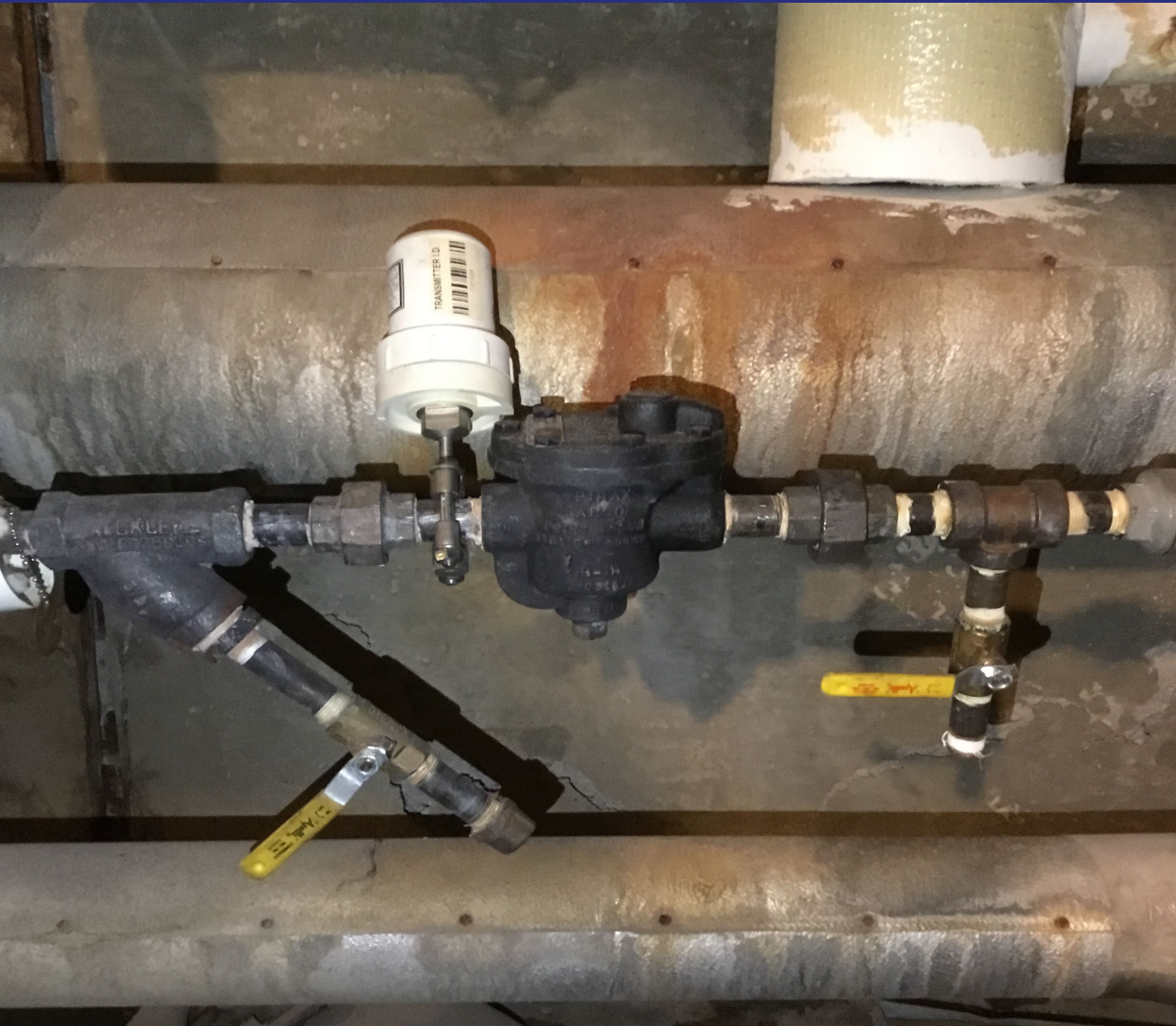
## Why?

1. High pressure (110 P.S.I.) traps are manually tested once per month.
2. One High pressure trap that has failed open, Costs \$600/month
3. A trap that has failed closed, can cause water hammer and damage to piping/components

# System Components

- Transmitter
- Repeater
- Receiver
- Computer





## Transmitter

The wireless transmitter clamps to the pipe sensing temperature of the piping and an ultrasonic signal of the piping, relaying real time status information to the repeaters

# Transmitter

- 5 status indications
  - OK
  - Blow thru
  - Cold
  - Lost
  - Low





# Repeater

Relays transmitter status to the next repeater until information reaches the receiver

# Receiver

Downloads repeater information to a web based software program sending e-mail notification of a status change





# Software

[Critical Equipment](#)
[Failed Equipment](#)
[All Equipment](#)
[Configuration](#)
[Logout](#)

## All Equipment

Device Type

Rectangular Snip

Tag#	Tx#	Location	Type	Model No.	Status	Battery	Radio	# State Changes	Last Report	Previous Report - State	Cycle Count
<a href="#">NWT-01</a>	7351376	NW Tunnel Isolation Vale	Steam Trap		OK	OK	65	81	Wed Jan 29 13:40:03 2020	Sun Jan 19 03:06:28 2020 - <a href="#">CD</a>	N/A
<a href="#">NWT-02</a>	7351571	First North of #1	Steam Trap		OK	OK	18	53	Wed Jan 29 13:17:45 2020	Sun May 12 19:36:13 2019 - <a href="#">CD</a>	N/A
<a href="#">NWT-03</a>	7351588	NW & Hancock Merge	Steam Trap		OK	OK	39	40	Wed Jan 29 13:39:37 2020	Sat Jun 15 22:36:37 2019 - LOS	N/A
<a href="#">NWT-04</a>	7351591	Hancock Middle Pill Box	Steam Trap		OK	OK	31	129	Wed Jan 29 13:32:00 2020	Mon Nov 11 11:55:57 2019 - <a href="#">CD</a>	N/A
<a href="#">NWT-05</a>	7402164	KFB Tie-In	Steam Trap		OK	OK	40	33	Wed Jan 29 13:37:39 2020	Sun May 12 17:29:13 2019 - <a href="#">CD</a>	N/A
<a href="#">NWT-06</a>	7351635	RAB Merge	Steam Trap		OK	OK	19	119	Wed Jan 29 13:39:31 2020	Sun Oct 13 16:54:31 2019 - <a href="#">CD</a>	N/A
<a href="#">NWT-07</a>	7351638	RAB Steam Station(high side)	Steam Trap		OK	OK	17	143	Wed Jan 29 13:30:44 2020	Sat Jan 25 17:23:04 2020 - <a href="#">CD</a>	N/A
<a href="#">NWT-08</a>	7351565	RAB Steam Station(med. side)	Steam Trap		OK	OK	20	66	Wed Jan 29 13:40:14 2020	Sat Oct 12 10:54:28 2019 - <a href="#">CD</a>	N/A
<a href="#">NWT-09</a>	7351634	North RAB Pill Box	Steam Trap		OK	OK	23	58	Wed Jan 29 13:36:15 2020	Sun May 12 19:46:31 2019 - <a href="#">CD</a>	N/A
<a href="#">NWT-10</a>	7351521	Glasshouse South Pill box	Steam Trap		OK	OK	34	39	Wed Jan 29 13:36:06 2020	Sat Jul 6 16:13:52 2019 - LOS	N/A
<a href="#">NWT-11</a>	7402167	Glasshouse NW Pill Box	Steam Trap		OK	OK	13	45	Wed Jan 29 13:35:06 2020	Sun May 12 19:49:45 2019 - <a href="#">CD</a>	N/A
<a href="#">NWT-12</a>	7351525	Mid UH N/S Pill Box	Steam Trap		OK	OK	21	45	Wed Jan 29 13:40:12 2020	Sat Dec 7 11:53:41 2019 - LOS	N/A
<a href="#">NWT-13</a>	7402098	UH Take-Off	Steam Trap		OK	OK	0	49	Wed Jan 29 13:14:07 2020	Wed May 22 19:37:08 2019 - LOS	N/A
<a href="#">NWT-14</a>	7351529	UH E/W Tunnel	Steam Trap		OK	OK	6	66	Wed Jan 29 13:31:56 2020	Sun May 12 17:37:10 2019 - <a href="#">CD</a>	N/A
<a href="#">NWT-15</a>	7402031	Between UH and GFS	Steam Trap		OK	Low	14	43	Wed Jan 29 13:36:59 2020	Sat Jul 13 01:04:11 2019 - LOS	N/A

1 [2](#) [3](#) [4](#) [Next>>](#)



# Questions?

## Contact Information

### **Chris Chestney**

Pipefitter/Welder  
Facilities Management  
clchest@ilstu.edu

### **Rick Marr**

Pipefitter Foreman  
Facilities Management  
rsmarr@ilstu.edu



**ILLINOIS STATE  
UNIVERSITY**  
*Illinois' first public university.*



# Adjusting to Changing Technologies in HVAC

Josh Wiechman  
Illinois State University  
Facilities Management

**2020 ILAPPA CONFERENCE**

March 11 & 12, 2020  
Illinois State University



## The Situation of Automation “Where we were”

- Most of the Siemens network was RS-485. Across four trunks we still had far too much traffic on this network.
- We had limited storage and obsolete O.S.'s. This required us to buy a new server for Insight.
- Insight is going to be unsupported by Siemens soon. The vast majority of controllers on campus are Siemens P2 (Proprietary).

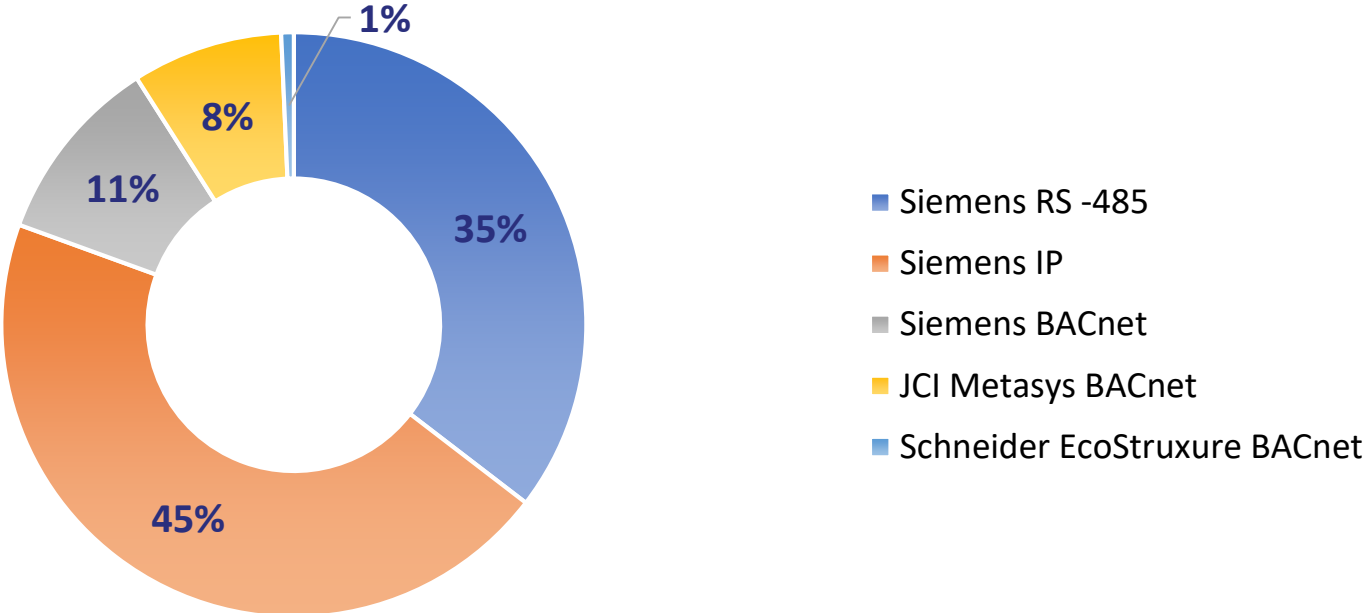
## The Situation of Automation “Where we were”

ISU’s campus currently hosts four building automation systems:

- Siemens Insight
- Siemens Desigo
- Johnson Controls Metasys
- Schneider EcoStruxure

# The Situation of Automation “Where we were”

## Mix of 144 Building Automation Controllers



## The Situation of Automation “Where we were”

**Over 90% of our system on campus is Siemens**

- Desigo is a BACnet based system
- Desigo is compatible with P2 over IP panels

## The Situation of Automation “Our Goal”

Our priority is to have one front end for our operators and end users.

### **This will require:**

- Updating Siemens Legacy Controllers & Installing Ethernet Communications
- Migrating JCI & Schneider Controllers to Desigo
- Training For Everyone





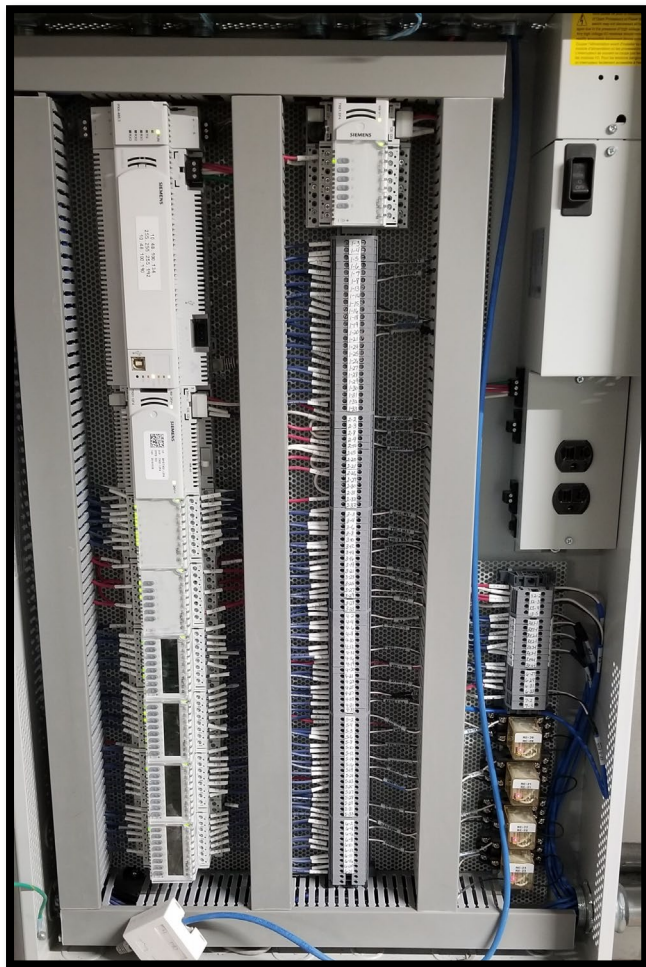
# “Our Goal” Replacing Legacy Controllers

An AEM will be used for panels that cant be replaced quickly



## Controllers Compatible for the Migration

Siemens PXC100



JCI Metasys  
NCE & NAE

## The Situation of Automation “Our Challenges While Migrating”

- Upgrading Siemens legacy controllers to BACnet requires rebuilding the point database
- Compatibility issues with Insight & Win10
- Insight BACnet has difficulty with some features while integrating JCI BACnet
- Becoming BACnet compliant, instance numbers and BBMD's
- Learning a new BAS

# Questions?

## Contact Information

### **Chris Chestney**

Pipefitter  
Facilities Management  
clchest@ilstu.edu

### **Rick Marr**

Pipefitter Foreman  
Facilities Management  
rsmarr@ilstu.edu

### **Josh Wiechman**

Building Automation Technician Foreman  
Facilities Management  
jrwiec2@ilstu.edu